

VALENCIA COMMUNITY COLLEGE

College Trigonometry
Quiz 3

Solutions

Name:
Date:

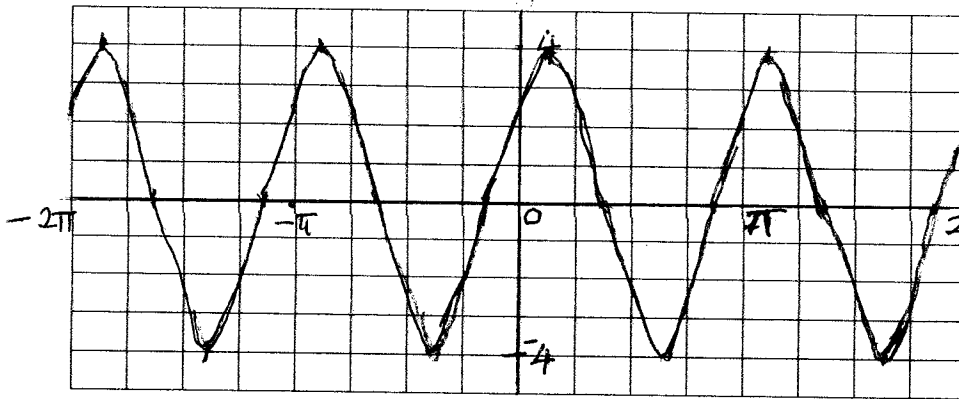
Graphing Calculators are not allowed

For the following trigonometric functions:

- State the amplitude (if applicable), range, period, phase shift (if any)
- Sketch the graph in the given interval. (Sketch a reasonable graph!!!!)

1) $y = 4 \sin\left(2x + \frac{\pi}{4}\right)$ in the interval $-2\pi \leq x \leq 2\pi$.

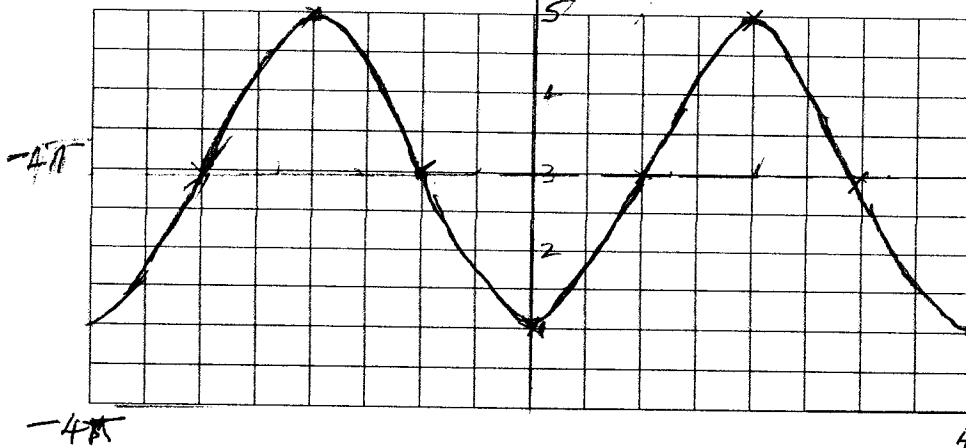
(Scale: x-axis : 4 units = π , y-axis : 1 unit = 1)



Amp = 4
Range: $-4 \leq y \leq 4$
Period = π
PS = $-\frac{\pi}{8}$

2) $y = 3 - 2 \cos\left(\frac{x}{2}\right)$ in the interval $-4\pi \leq x \leq 4\pi$

(Scale: x-axis : 2 units = π , y-axis : 1 unit = 1)



Amp = 2
Range: $1 \leq y \leq 5$
Period = 4π